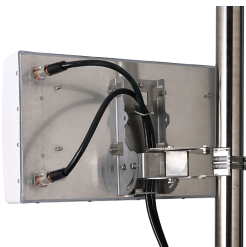


CMAX-DM30-43-V53



Cell-Max™ Low PIM Directional High Capacity Venue MIMO Antenna, 698–960 MHz and 1710–2700 MHz, 30-Deg, 4.3-10

This product will be discontinued on: December 30, 2023

Replaced By:

CMAX-LHM2-30-I53 Low PIM Directional High Capacity Venue 2x2 MIMO Antenna 4G/5G/C-Band, 617–960 MHz, 1695–2700 MHz and 3300-4200MHz, 4.3-10

Product Classification

Product Type	Over-the-head stadium antenna
Product Brand	Cell-Max™

General Specifications

Application	Indoor/Outdoor
Antenna Type	Directional
Antenna Array Characteristic	MIMO 2x2
Polarization	±45°
Color	White (RAL 9016)
Number of Ports	2
Radome Material	ABS, UV resistant
RF Connector Interface	4.3-10 Female

Dimensions

Width	340.4 mm 13.402 in
Depth	127 mm 5 in
Length	609.6 mm 24 in

Outline Drawing



50 ohm

dc Ground

Values typical, unless otherwise stated

Electrical Specifications

Mechanical Specifications

CMAX-DM30-43-V53

Wind Loading @ Velocity, maximum	686.0 N @ 216 km/h (154.2 lbf @ 216 km/h)
Wind Speed, maximum	216 km/h 134.216 mph

Environmental Specifications

Operating Temperature	-40 °C to +60 °C (-40 °F to +140 °F)
Relative Humidity	Up to 100%
Ingress Protection Test Method	IEC 60529:2001, IP65
Vibration Test Method	ASTM D4169 IEC 60068-2-6

Packaging and Weights

Width, packed	350 mm 13.78 in
Depth, packed	210 mm 8.268 in
Length, packed	890 mm 35.039 in
Included	Mounting bracket
Packaging quantity	1
Weight, gross	12.4 kg 27.337 lb
Weight, net	7 kg 15.432 lb

Regulatory Compliance/Certifications

Agency	Classification
CHINA-ROHS	Below maximum concentration value
REACH-SVHC	Compliant as per SVHC revision on www.commscope.com/ProductCompliance
ROHS	Compliant
UK-ROHS	Compliant

