

# CloudEngine S5736-S Series Multi-GE Switches Datasheet

CloudEngine S5736-S series switches are standard Multi-GE access switches that provide 24-port model, and provide four 10GE SFP+ uplink ports and one extended slot.


## Introduction

CloudEngine S5736-S series Switches are standard Multi-GE access switches developed by Huawei for the Wi-Fi 6 era. The CloudEngine S5736-S builds on Huawei's unified Versatile Routing Platform (VRP) and boasts various IDN features. This series switches support simplified operations and maintenance (O&M), flexible Ethernet networking, enhanced Layer 3 features and mature IPv6 features. It can also provide flexible port access rates and powerful PoE power supply capabilities, making it to be a good choice for WLAN APs in the high-quality campus networks. With these merits, the CloudEngine S5736-S can be used as an access or aggregation switch on a campus network or as an access switch for Metropolitan Area Network.

## Product Overview

### Models and Appearances

The following models are available in the CloudEngine S5736-S series.

Models and Appearances	Description
 <p>CloudEngine S5736-S24UM4XC</p>	<ul style="list-style-type: none"> <li>• 24 x 100M/1G/2.5G/5G/10G Base-T Ethernet ports, 4 x 10GE SFP+ ports</li> <li>• One extended slot</li> <li>• PoE++</li> <li>• 1+1 power backup</li> <li>• Forwarding performance: 480 Mpps</li> <li>• Switching capacity*: 880 Gbps/2.72 Tbps</li> </ul> <p><i>Note: All ports support GE by default. You can purchase right-to-use (RTU) licenses to upgrade the port rate (every 12 ports per RTU license) from GE to 2.5GE, 5GE, or 10GE.</i></p>



Note: The value before the slash (/) refers to the device's switching capability, while the value after the slash (/) means the system's switching capability.

## Subcards

The following table lists the subcards applicable to the CloudEngine S5736-S.

Technical specifications of the subcards applicable to the CloudEngine S5736-S series


Subcards	Technical Specifications	Applied Switch Model
----------	--------------------------	----------------------

Subcards	Technical Specifications	Applied Switch Model
 <p>S7X08000</p>	<ul style="list-style-type: none"> <li>8*10GE SFP+ or 2*25GE SFP28</li> <li>Operating temperature: 0°C to 45°C (32°F to 113°F)</li> <li>Relative humidity: 5% to 95%</li> <li>Storage temperature: -40°C to +70°C (-40°F to +158°F)</li> </ul> <p>Note: The 8*10GE SFP+ subcard works as 8*10GE SFP+ by default, and can be changed to 2*25GE SFP28 as required.</p>	CloudEngine S5736-S24UM4XC
 <p>S7Q02001</p>	<ul style="list-style-type: none"> <li>2*40GE QSFP+</li> <li>Operating temperature: 0°C to 45°C (32°F to 113°F)</li> <li>Relative humidity: 5% RH to 95% RH</li> <li>Storage temperature: -40°C to +70°C (-40°F to +158°F)</li> </ul> <p>Note: Only V200R021C01 and later versions</p>	CloudEngine S5736-S24UM4XC
 <p>ES5D21Q02Q00</p>	<ul style="list-style-type: none"> <li>2*40GE QSFP+</li> <li>Operating temperature: 0°C to 45°C (32°F to 113°F)</li> <li>Relative humidity: 5% to 95%</li> <li>Storage temperature: -40°C to +70°C (-40°F to +158°F)</li> </ul>	CloudEngine S5736-S24UM4XC
 <p>ES5D21Q04Q01</p>	<ul style="list-style-type: none"> <li>4*40GE QSFP+</li> <li>Operating temperature: 0°C to 45°C (32°F to 113°F)</li> <li>Relative humidity: 5% RH to 95% RH</li> <li>Storage temperature: -40°C to +70°C (-40°F to +158°F)</li> </ul>	CloudEngine S5736-S24UM4XC

## Fan Models



The following table lists the fan module applicable to the CloudEngine S5736-S.


Technical specifications of the fan module applicable to the CloudEngine S5736-S series

Fan Module	Technical Specifications	Applied Switch Model
 <p>FAN-023A-B</p>	<ul style="list-style-type: none"> <li>Dimensions (W x D x H): 40 mm x 100.3 mm x 40 mm</li> <li>Number of fans: 1</li> <li>Weight: 0.1 kg</li> <li>Maximum power consumption: 7.2 W</li> <li>Maximum fan speed: 18500±10% revolutions per minute (RPM)</li> <li>Maximum wind rate: 23 cubic feet per minute (CFM)</li> <li>Hot swap: Supported</li> </ul>	<ul style="list-style-type: none"> <li>CloudEngine S5736-S24UM4XC</li> </ul>

## Power Supply

The following table lists the power supplies applicable to the CloudEngine S5736-S.

Power Module	Technical Specifications	Applied Switch Model
 <p>PAC600S56-CB</p>	<ul style="list-style-type: none"> <li>• Dimensions (H x W x D): 40 mm x 90 mm x 215 mm (1.6 in. x 3.5 in. x 8.5 in.)</li> <li>• Weight: 1.1 kg (2.43 lb)</li> <li>• Rated input voltage range:                             <ul style="list-style-type: none"> <li>– 100 V AC to 130 V AC; 50/60 Hz</li> <li>– 100 V AC to 240 V AC, 50/60 Hz</li> <li>– 240 V DC</li> </ul> </li> <li>• Maximum input voltage range:                             <ul style="list-style-type: none"> <li>– 90 V AC to 290 V AC, 45 Hz to 66 Hz</li> <li>– 190 V DC to 290 V DC</li> </ul> </li> <li>• Maximum input current:                             <ul style="list-style-type: none"> <li>– 100 V AC to 130 V AC: 8 A</li> <li>– 100 V AC to 240 V AC: 8 A</li> <li>– 240 V DC: 4 A</li> </ul> </li> <li>• Rated output current:                             <ul style="list-style-type: none"> <li>– 100 V AC to 130 V AC input: 5.36 A</li> <li>– 200–240 V AC and 240 V DC input: 10.72 A</li> </ul> </li> <li>• Rated output voltage: 56 V</li> <li>• Rated output power:                             <ul style="list-style-type: none"> <li>– 100 V AC to 130 V AC input:                                     <ul style="list-style-type: none"> <li>· Total power: 300 W</li> </ul> </li> <li>– 200 V AC to 240 V AC input and 240 V DC input:                                     <ul style="list-style-type: none"> <li>· Total power: 600 W</li> </ul> </li> </ul> </li> <li>• Hot swap: Supported</li> </ul>	<ul style="list-style-type: none"> <li>• CloudEngine S5736-S24UM4XC</li> </ul>
 <p>PAC1000S56-DB</p>	<ul style="list-style-type: none"> <li>• Dimensions (H x W x D): 40 mm x 90 mm x 215 mm (1.6 in. x 3.5 in. x 8.5 in.)</li> <li>• Weight: 1.1 kg (2.43 lb)</li> <li>• Rated input voltage range:                             <ul style="list-style-type: none"> <li>– 100 V AC to 130 V AC, 50/60 Hz</li> <li>– 200 V AC to 240 V AC, 50/60 Hz</li> <li>– 240 V DC</li> </ul> </li> <li>• Maximum input voltage range:                             <ul style="list-style-type: none"> <li>– 90 V AC to 290 V AC, 45 Hz to 65 Hz</li> <li>– 190 V DC to 290 V DC</li> </ul> </li> <li>• Input current:                             <ul style="list-style-type: none"> <li>– 100 V AC to 130 V AC: 12 A</li> <li>– 200 V AC to 240 V AC: 8 A</li> <li>– 240 V DC: 8 A</li> </ul> </li> <li>• Maximum output current:                             <ul style="list-style-type: none"> <li>– 100 V AC to 130 V AC input: 16.08 A</li> <li>– 200 V AC to 240 V AC input and 240 V DC input: 17.86 A</li> </ul> </li> <li>• Maximum output power:</li> </ul>	<ul style="list-style-type: none"> <li>• CloudEngine S5736-S24UM4XC</li> </ul>

Power Module	Technical Specifications	Applied Switch Model
	<ul style="list-style-type: none"> <li>- Total power: 900 W (100 V AC to 130 V AC input)/1000 W (200 V AC to 240 V AC input and 240 V DC input)</li> <li>• Hot swap: Supported</li> </ul>	
 PDC1000S56-CB	<ul style="list-style-type: none"> <li>• Dimensions (H x W x D): 40 mm x 90 mm x 215 mm (1.6 in. x 3.5 in. x 8.5 in.)</li> <li>• Weight: 1.02 kg (2.25 lb)</li> <li>• Rated input voltage range: -48 V DC to -60 V DC</li> <li>• Maximum input voltage range: -38.4 V DC to -72 V DC</li> <li>• Maximum input current: 30 A</li> <li>• Maximum output current: 83.3 A</li> <li>• Maximum output power: 1000 W</li> <li>• Hot swap: Supported</li> </ul>	<ul style="list-style-type: none"> <li>• CloudEngine S5736-S24UM4XC</li> </ul> Note: Only V200R021C01 and later versions

CloudEngine S5736-S series Multi-GE switches support PoE. They have two power module slots, each of which can have a 1000 W PoE power module installed.

The following table lists its power supply configurations.

Power supply configurations of CloudEngine S5736-S

Model	Power Module 1	Power Module 2	Available PoE Power	Maximum Number of Ports (Fully Loaded)
S5736-S24UM4XC	1000 W AC (220 V) 1000 W DC	-	841 W	<ul style="list-style-type: none"> <li>• 802.3af (15.4 W per port): 24</li> <li>• 802.3at (30 W per port): 24</li> <li>• 802.3bt (60 W per port): 14</li> <li>• 802.3bt (90 W per port): 9</li> </ul>
	1000 W AC (110 V)	-	746 W	<ul style="list-style-type: none"> <li>• 802.3af (15.4 W per port): 24</li> <li>• 802.3at (30 W per port): 24</li> <li>• 802.3bt (60 W per port): 12</li> <li>• 802.3bt (90 W per port): 8</li> </ul>
	1000 W AC (220 V) 1000 W DC	1000 W AC (220 V) 1000 W DC	1791 W	<ul style="list-style-type: none"> <li>• 802.3af (15.4 W per port): 24</li> <li>• 802.3at (30 W per port): 24</li> <li>• 802.3bt (60 W per port): 24</li> <li>• 802.3bt (90 W per port): 19</li> </ul>
	1000 W AC (110 V) 1000 W DC	1000 W AC (110 V)	1601 W	<ul style="list-style-type: none"> <li>• 802.3af (15.4 W per port): 24</li> <li>• 802.3at (30 W per port): 24</li> <li>• 802.3bt (60 W per port): 24</li> <li>• 802.3bt (90 W per port): 17</li> </ul>
	600 W AC (220 V)	-	461 W	<ul style="list-style-type: none"> <li>• 802.3af (15.4 W per port): 24</li> <li>• 802.3at (30 W per port): 15</li> <li>• 802.3bt (60 W per port): 7</li> <li>• 802.3bt (90 W per port): 5</li> </ul>
	600 W AC (110 V)	-	176 W	<ul style="list-style-type: none"> <li>• 802.3af (15.4 W per port): 11</li> <li>• 802.3at (30 W per port): 5</li> </ul>

Model	Power Module 1	Power Module 2	Available PoE Power	Maximum Number of Ports (Fully Loaded)
				<ul style="list-style-type: none"> <li>802.3bt (60 W per port): 2</li> <li>802.3bt (90 W per port): 1</li> </ul>
	600 W AC (220 V)	600 W AC (220 V)	1031 W	<ul style="list-style-type: none"> <li>802.3af (15.4 W per port): 24</li> <li>802.3at (30 W per port): 24</li> <li>802.3bt (60 W per port): 17</li> <li>802.3bt (90 W per port): 11</li> </ul>
	600 W AC (110 V)	600 W AC (110 V)	461 W	<ul style="list-style-type: none"> <li>802.3af (15.4 W per port): 24</li> <li>802.3at (30 W per port): 15</li> <li>802.3bt (60 W per port): 7</li> <li>802.3bt (90 W per port): 5</li> </ul>
	1000 W AC (220 V) 1000 W DC	600 W AC (220 V)	1411 W	<ul style="list-style-type: none"> <li>802.3af (15.4 W per port): 24</li> <li>802.3at (30 W per port): 24</li> <li>802.3bt (60 W per port): 23</li> <li>802.3bt (90 W per port): 15</li> </ul>

## Product Features and Highlights

### High-density Multi-GE Access Interface

- The uplink bandwidth of WLAN APs has been increased from 2.5 Gbit/s in 802.11ac to 5 Gbit/s or 10 Gbit/s. Traditional gigabit access or Multi-gigabit bundled access cannot meet the uplink bandwidth requirements of APs. With the launch of the CloudEngine S5736-S series Multi-GE switches, the ports support 100M/1/2.5/5/10G auto-sensing, meeting the bandwidth requirements of high-speed wireless APs in the Wi-Fi 6 era. In addition, Multi-GE ports support up to 90 W PoE++, which provides high-power power for powered devices (PDs) such as APs and IP cameras.
- The S5736-S series switches provide industry-leading Multi-GE port density, switching capacity, and packet forwarding rate. A single switch supports a maximum of 24 100M/1G/2.5G/5G/10G Base-T auto-sensing ports and 10G optical uplink ports, provides one extended slot to support 8\*10GE or 4\*40GE subcards, meets various device interconnection requirements and can be seamlessly integrated into the existing network.

### Flexible Ethernet Networking

- In addition to traditional Spanning Tree Protocol (STP), Rapid Spanning Tree Protocol (RSTP), and Multiple Spanning Tree Protocol (MSTP), the CloudEngine S5736-S supports Huawei-developed Smart Ethernet Protection (SEP) technology and the latest Ethernet Ring Protection Switching (ERPS) standard. SEP is a ring protection protocol specific to the Ethernet link layer, and applies to various ring network topologies, such as open ring topology, closed ring topology, and cascading ring topology. This protocol is reliable, easy to maintain, and implements fast protection switching within 50 ms. ERPS is defined in ITU-T G.8032. It implements millisecond-level protection switching based on traditional Ethernet MAC and bridging functions.
- The CloudEngine S5736-S supports Smart Link and Virtual Router Redundancy Protocol (VRRP), which implement backup of uplinks. One CloudEngine S5736-S switch can connect to multiple aggregation switches through multiple links, significantly improving reliability of access devices.

### Various Security Control Methods

- The CloudEngine S5736-S supports 802.1x authentication, MAC address authentication, Portal authentication, and hybrid authentication, and can dynamically delivery user policies such as VLANs, QoS policies, and access control lists (ACL). It also supports user management based on user groups.
- The CloudEngine S5736-S provides a series of mechanisms to defend against DoS and user-targeted attacks. DoS attacks are targeted at switches and include SYN flood, Land, Smurf, and ICMP flood attacks. User-targeted attacks include bogus DHCP server attacks, IP/MAC address spoofing, DHCP request flood, and change of the DHCP CHADDR value.

- The CloudEngine S5736-S sets up and maintains a DHCP snooping binding table, and discards the packets that do not match the table entries. You can specify DHCP snooping trusted and untrusted ports to ensure that users connect only to the authorized DHCP server.
- The CloudEngine S5736-S supports strict ARP learning, which prevents ARP spoofing attackers from exhausting ARP entries.
- The CloudEngine S5736-S supports Media Access Control Security (MACsec) with the port of subcard (8\*10GE SFP+ subcard) . It provides identity authentication, data encryption, integrity check, and replay protection to protect Ethernet frames and prevent attack packets.

## Mature IPv6 Features

- The CloudEngine S5736-S is developed based on the mature, stable VRP and supports IPv4/IPv6 dual stacks, IPv6 routing protocols (RIPng, OSPFv3, BGP4+, and IS-IS for IPv6). With these IPv6 features, the CloudEngine S5736-S can be deployed on a pure IPv4 network, a pure IPv6 network, or a shared IPv4/IPv6 network, helping achieve IPv4-to-IPv6 transition.

## Intelligent Stack (iStack)

- The CloudEngine S5736-S supports the iStack function that combines multiple switches into a logical switch. Member switches in a stack implement redundancy backup to improve device reliability and use inter-device link aggregation to improve link reliability. iStack provides high network scalability. You can increase a stack's ports, bandwidth, and processing capacity by simply adding member switches. iStack also simplifies device configuration and management. After a stack is set up, up to nine physical switches can be virtualized into one logical device. You can log in to any member switch in the stack to manage all the member switches in the stack.

## Intelligent O&M

- The CloudEngine S5736-S provides telemetry technology to collect device data in real time and send the data to Huawei campus network analyzer CampusInsight. The CampusInsight analyzes network data based on the intelligent fault identification algorithm, accurately displays the real-time network status, effectively demarcates and locates faults in a timely manner, and identifies network problems that affect user experience, accurately guaranteeing user experience.
- The CloudEngine S5736-S supports a variety of intelligent O&M features for audio and video services, including the enhanced Media Delivery Index (eMDI). With this eMDI function, the switch can function as a monitored node to periodically conduct statistics and report audio and video service indicators to the CampusInsight platform. In this way, the CampusInsight platform can quickly demarcate audio and video service quality faults based on the results of multiple monitored nodes.
- The CloudEngine S5736-S supports hardware ASIC to support for layer2/3 forwarding, Access Control List(ACL) and Quality of Service(QoS).

## VXLAN Features

- VXLAN is used to construct a Unified Virtual Fabric (UVF). As such, multiple service networks or tenant networks can be deployed on the same physical network, and service and tenant networks are isolated from each other. This capability truly achieves 'one network for multiple purposes'. The resulting benefits include enabling data transmission of different services or customers, reducing the network construction costs, and improving network resource utilization.
- The CloudEngine S5736-S series switches are hardware ready to support VXLAN and allow centralized and distributed VXLAN gateway deployment modes. These switches also support the BGP EVPN protocol for dynamically establishing VXLAN tunnels and can be configured using NETCONF/YANG.

## PoE Function

CloudEngine S5736-S PoE models can support PoE++(up to 90W power supply), Meeting high-power power supply requirements for Wi-Fi 6 APs, IP cameras, and Video phones.

- **Perpetual PoE:** When a PoE switch is abnormal Power-off or the software version is upgraded, the power supply to PDs is not interrupted. This capability ensures that PDs are not powered off during the switch reboot.
- **Fast PoE:** PoE switches can supply power to PDs within seconds after they are powered on. This is different from common switches that generally take 1 to 3 minutes to start to supply power to PDs. When a PoE switch reboots due to a power failure, the PoE switch continues to supply power to the PDs immediately after being powered on without waiting until it finishes reboot. This greatly shortens the power failure time of PDs.

## Intelligent Upgrade

- Switches support the intelligent upgrade feature. Specifically, switches obtain the version upgrade path and download the newest version for upgrade from the Huawei Online Upgrade Platform (HOUP). The entire upgrade process is highly automated and achieves one-click upgrade. In addition, preloading the version is supported, which greatly shortens the upgrade time and service interruption time.
- The intelligent upgrade feature greatly simplifies device upgrade operations and makes it possible for the customer to upgrade the version independently. This greatly reduces the customer's maintenance costs. In addition, the upgrade policies on the HOUP platform standardize the upgrade operations, which greatly reduces the risk of upgrade failures.

## Cloud Management

- The Huawei cloud management platform allows users to configure, monitor, and inspect switches on the cloud, reducing on-site deployment and O&M manpower costs and decreasing network OPEX. Huawei switches support both cloud management and on-premise management modes. These two management modes can be flexibly switched as required to achieve smooth evolution while maximizing return on investment (ROI).

## Open Programmability System(OPS)

- Open Programmability System(OPS) is an open programmable system based on the Python language. IT administrators can program the O&M functions of a switch through Python scripts to quickly innovate functions and implement intelligent O&M.

# Licensing

## IDN One Software

CloudEngine S5736-S supports both the traditional feature-based licensing mode and the latest Huawei IDN One Software (N1 mode for short) licensing mode. The N1 mode is ideal for deploying Huawei CloudCampus Solution in the on-premises scenario, as it greatly enhances the customer experiences in purchasing and upgrading software services with simplicity.

### Software Package Features in N1 Mode

Switch Functions	N1 Basic Software	N1 Foundation Software Package	N1 Advanced Software Package
<b>Basic network functions:</b> Layer 2 functions, IPv4, IPv6, SVF, and others Note: For details, see the Service Features	√	√	√
<b>Basic network automation based on the iMaster NCE-Campus:</b> <ul style="list-style-type: none"> <li>Basic automation: Plug-and-play</li> <li>Basic monitoring: Application visualization</li> <li>NE management: Image and topology management and discovery</li> </ul>	×	√	√
<b>Advanced network automation and intelligent O&amp;M:</b> User access authentication and CampusInsight basic functions	×	×	√

## RTU license

CloudEngine S5736-S series Multi-GE switches use the innovative RTU license design. The RTU license is used to flexibly manage and control downlink Multi-GE ports (every 12 ports in a group).The switches can be configured and upgraded on demand,when working with Wi-Fi 6 APs, aggregation switches, and core switches, they can quickly build a flexible campus network to meet actual service requirements , enable customers' networks and services to grow together, and avoid excessive investment

RTU license decription	CloudEngine S5736-S24UM4XC
1G to 2.5G Electronic RTU License, 12-port	√
1G to 5G Electronic RTU License, 12-port	√
1G to 10G Electronic RTU License, 12-port	√
2.5G to 5G Electronic RTU License, 12-port	√
2.5G to 10G Electronic RTU License, 12-port	√
5G to 10G Electronic RTU License, 12-port	√

## Product Specifications

### Functions and Features

Except for special instructions, the following features are supported by CloudEngine S5736-S with N1 basic software.

Function and feature metrics for the CloudEngine S5736-S series

Function and Feature		Description	CloudEngine S5736-S Series
Ethernet features	Ethernet basics	Full-duplex, half-duplex, and auto-negotiation	Yes
		Rate auto-negotiation on an interface	Yes
		Flow control on an interface	Yes
		Jumbo frames	Yes
		Link aggregation	Yes
		Load balancing among links of a trunk	Yes
		Transparent transmission of Layer 2 protocol packets	Yes
		Device Link Detection Protocol (DLDP)	Yes
		Link Layer Discovery Protocol (LLDP)	Yes
		Link Layer Discovery Protocol-Media Endpoint Discovery (LLDP-MED)	Yes
		Interface isolation	Yes
		Broadcast traffic suppression on an interface	Yes
		Multicast traffic suppression on an interface	Yes
		Unknown unicast traffic suppression on an interface	Yes
		VLAN broadcast traffic suppression	Yes
		VLAN multicast traffic suppression	Yes
		VLAN unknown unicast traffic suppression	Yes
VLAN	VLAN specification	4094	



Function and Feature		Description	CloudEngine S5736-S Series	
		VLANIF interface specification	1024	
		Access mode	Yes	
		Trunk mode	Yes	
		Hybrid mode	Yes	
		QinQ mode	Yes	
		Default VLAN	Yes	
		VLAN assignment based on interfaces	Yes	
		VLAN assignment based on protocols	Yes	
		VLAN assignment based on IP subnets	Yes	
		VLAN assignment based on MAC addresses	Yes	
		VLAN assignment based on MAC address + IP address	Yes	
		VLAN assignment based on MAC address + IP address + interface number	Yes	
		Adding double VLAN tags to packets based on interfaces	Yes	
		Super-VLAN	Yes	
		Super-VLAN specification	256	
		Sub-VLAN	Yes	
		Sub-VLAN specification	1K	
		VLAN mapping	Yes	
		Selective QinQ	Yes	
		MUX VLAN	Yes	
		Voice VLAN	Yes	
		Guest VLAN	Yes	
		GVRP	GARP	Yes
			GVRP	Yes
		VCMP	VCMP	Yes
		MAC	MAC address	32K
Automatic learning of MAC addresses	Yes			
Automatic aging of MAC addresses	Yes			
Static, dynamic, and blackhole MAC address entries	Yes			
Interface-based MAC address learning limiting	Yes			
Sticky MAC	Yes			

Function and Feature	Description	CloudEngine S5736-S Series	
	MAC address flapping detection	Yes	
	Configuring MAC address learning priorities for interfaces	Yes	
	MAC address spoofing defense	Yes	
	Port bridge	Yes	
	ARP	Static ARP	Yes
		Dynamic ARP	Yes
		ARP entry	20K
		ARP aging detection	Yes
		Intra-VLAN proxy ARP	Yes
		Inter-VLAN proxy ARP	Yes
		Routed proxy ARP	Yes
		Multi-egress-interface ARP	Yes
	Ethernet loop protection	MSTP	STP
RSTP			Yes
MSTP			Yes
VBST			Yes
BPDU protection			Yes
Root protection			Yes
Loop protection			Yes
Defense against TC BPDU attacks			Yes
Loopback detection		Loop detection on an interface	Yes
SEP		SEP	Yes
Smart Link		Smart Link	Yes
		Smart Link multi-instance	Yes
		Monitor Link	Yes
RRPP		RRPP	Yes
		Single RRPP ring	Yes
		Tangent RRPP ring	Yes
		Intersecting RRPP ring	Yes
		Hybrid networking of RRPP rings and other ring networks	Yes
ERPS		G.8032 v1	Yes
		G.8032 v2	Yes
		ERPS semi-ring topology	Yes

Function and Feature		Description	CloudEngine S5736-S Series
		ERPS closed-ring topology	Yes
IPv4/IPv6 forwarding	IPv4 and unicast routing	IPv4 static routing	Yes
		VRF	Yes
		DHCP client	Yes
		DHCP server	Yes
		DHCP relay	Yes
		DHCP policy VLAN	Yes
		URPF check	Yes
		Routing policies	Yes
		IPv4 routes	8K
		RIPv1	Yes
		RIPv2	Yes
		OSPF	Yes
		BGP	Yes
		MBGP	Yes
		IS-IS	Yes
		Policy-based routing (PBR)	Yes
		Multicast routing features	IGMPv1/v2/v3
	PIM-DM		Yes
	PIM-SM		Yes
	MSDP		Yes
	IPv4 multicast routes		1.5K
	IPv6 multicast routes		500
	Multicast routing policies		Yes
	RPF		Yes
	IPv6 features	IPv6 protocol stack	Yes
		ND	Yes
		ND entry	10K
		ND snooping	Yes
		DHCPv6 snooping	Yes
		RIPng	Yes
		DHCPv6 server	Yes
		DHCPv6 relay	Yes
		OSPFv3	Yes

Function and Feature		Description	CloudEngine S5736-S Series
		BGP4+	Yes
		IS-IS for IPv6	Yes
		IPv6 routes	4K
		VRRP6	Yes
		MLDv1/v2	Yes
		PIM-DM for IPv6	Yes
		PIM-SM for IPv6	Yes
	IPv6 transition technology	IPv6 manual tunneling	Yes
Layer 2 multicast features	-	IGMPv1/v2/v3 snooping	Yes
		IGMP snooping proxy	Yes
		MLD snooping	Yes
		Multicast traffic suppression	Yes
		Inter-VLAN multicast replication	Yes
VPN	VPN	MCE	Yes
		Ping based-on VPN	Yes
		Telnet based-on VPN	Yes
		Trace based-on VPN	Yes
		VPN-Instance(IPV4)	64
		VPN-Instance(IPV6)	64
		Interface per VPN	64
Device reliability	BFD	Single-hop BFD	Yes
		BFD for static routes	Yes
		BFD for OSPF	Yes
		BFD for IS-IS	Yes
		BFD for BGP	Yes
		BFD for PIM	Yes
		BFD for VRRP	Yes
	Stacking	Service interface-based stacking	Yes
		Maximum number of stacked devices	9
		Stack bandwidth (Bidirectional)	480Gbps(MAX)
	VRRP	VRRP standard protocol	Yes
	Ethernet OAM	EFM (802.3ah)	Automatic discovery of links
Link fault detection			Yes
Link troubleshooting			Yes

Function and Feature		Description	CloudEngine S5736-S Series
	CFM (802.1ag)	Remote loopback	Yes
		Software-level CCM	Yes
		802.1ag MAC ping	Yes
		802.1ag MAC trace	Yes
	OAM association	Association between 802.1ag and 802.3ah	Yes
	Y.1731	Unidirectional delay and jitter measurement	Yes
		Bidirectional delay and jitter measurement	Yes
QoS features	Traffic classification	Traffic classification based on ACLs	Yes
		Matching the simple domains of packets	Yes
	Traffic behavior	Traffic filtering	Yes
		Traffic policing (CAR)	Yes
		Modifying the packet priorities	Yes
		Modifying the simple domains of packets	Yes
		Modifying the packet VLANs	Yes
	Traffic shaping	Traffic shaping on an egress interface	Yes
		Traffic shaping on queues on an interface	Yes
	Congestion avoidance	Weighted Random Early Detection (WRED) on queues	Yes
		Tail drop	Yes
	Congestion management	Priority Queuing (PQ)	Yes
		Weighted Deficit Round Robin (WDRR)	Yes
		PQ+WDRR	Yes
		Weighted Round Robin (WRR)	Yes
		PQ+WRR	Yes
	ACL	Packet filtering at Layer 2 to Layer 4	Basic IPv4 ACL
Advanced IPv4 ACL			Yes
Basic IPv6 ACL			Yes
Advanced IPv6 ACL			Yes
Layer 2 ACL			Yes
User group ACL			Yes
User-defined ACL			Yes
Configuration and maintenance	Login and configuration management	Command line interface (CLI)-based configuration	Yes
		Console terminal service	Yes
		Telnet terminal service	Yes

Function and Feature		Description	CloudEngine S5736-S Series
		SSH v1.5	Yes
		SSH v2.0	Yes
		SNMP-based NMS for unified configuration	Yes
		Web page-based configuration and management	Yes
		EasyDeploy (client)	Yes
		EasyDeploy (commander)	Yes
		SVF	Yes
		Cloud management	Yes
		OPS	Yes
	File system	Directory and file management	Yes
		File upload and download	Yes
	Monitoring and maintenance	Deception	Yes
		ECA	Yes
		eMDI	Yes
		Hardware monitoring	Yes
		Log information output	Yes
		Alarm information output	Yes
		Debugging information output	Yes
		Port mirroring	Yes
		Flow mirroring	Yes
		Remote mirroring	Yes
		Energy saving	Yes
	Version upgrade	Version upgrade	Yes
Version rollback		Yes	
Security	ARP security	ARP packet rate limiting	Yes
		ARP anti-spoofing	Yes
		Association between ARP and STP	Yes
		ARP gateway anti-collision	Yes
		Dynamic ARP Inspection (DAI)	Yes
		Static ARP Inspection (SAI)	Yes
		Egress ARP Inspection (EAI)	Yes
	IP security	ICMP attack defense	Yes
		IPSG for IPv4	Yes
		IPSG user capacity	3000

Function and Feature	Description	CloudEngine S5736-S Series		
	IPSG for IPv6	Yes		
	IPSGv6 user capacity	1500		
	Local attack defense	CPU attack defense	Yes	
	MFF	MFF	Yes	
	DHCP snooping	DHCP snooping	Yes	
		Option 82 function	Yes	
		Dynamic rate limiting for DHCP packets	Yes	
	Attack defense	Defense against malformed packet attacks	Yes	
		Defense against UDP flood attacks	Yes	
		Defense against TCP SYN flood attacks	Yes	
		Defense against ICMP flood attacks	Yes	
		Defense against packet fragment attacks	Yes	
		Local URPF	Yes	
	User access and authentication	AAA	Local authentication	Yes
			Local authorization	Yes
RADIUS authentication			Yes	
RADIUS authorization			Yes	
RADIUS accounting			Yes	
HWTACACS authentication			Yes	
HWTACACS authorization			Yes	
HWTACACS accounting		Yes		
NAC		802.1X authentication	Yes	
		MAC address authentication	Yes	
		Portal authentication	Yes	
		Hybrid authentication	Yes	
Policy association		Functioning as the control device	Yes	
Network management		-	Ping	Yes
	Tracert		Yes	
	NQA		Yes	
	NTP		Yes	
	iPCA		Yes	
	Smart Application Control (SAC)		Yes	
	NetStream		Yes	
	SNMP v1		Yes	

Function and Feature		Description	CloudEngine S5736-S Series
		SNMP v2c	Yes
		SNMP v3	Yes
		HTTP	Yes
		HTTPS	Yes
		RMON	Yes
		RMON2	Yes
		NETCONF/YANG	Yes
VXLAN*	-	VXLAN Layer 2 gateway	Yes
		VXLAN Layer 3 gateway	Yes
		Centralized gateway	Yes
		Distributed gateway	Yes
		BGP-EVPN	Yes
		BGP-EVPN neighbor capacity	Yes
Interoperability	-	VLAN-based Spanning Tree (VBST)	Yes
		Link-type Negotiation Protocol (LNP)	Yes
		VLAN Central Management Protocol (VCMP)	Yes

\*Hardware ready

#### NOTE

This content is applicable only to regions outside mainland China. Huawei reserves the right to interpret this content.

## Hardware Specifications

The following table lists the hardware specifications of the CloudEngine S5736-S.

### Hardware specifications of CloudEngine S5736-S models

Item		CloudEngine S5736-S24UM4XC
Physical specifications	Dimensions (H x W x D, mm)	43.6 x 442 x 420
	Chassis height	1 U
	Chassis weight (including packaging)	9.7kg
Fixed port	Multi-GE port	24
	10GE SFP+ port	4
Extended slot		One extended slot, 2*25GE SFP28 or 8 x 10GE SFP+, 4 x 40GE QSFP+ cards
Management port	ETH port	Supported
	Console port (RJ45)	Supported
	USB port	USB 2.0



Item		CloudEngine S5736-S24UM4XC
CPU	Frequency	1.2 GHz
	Cores	4
Storage	Memory (RAM)	2 GB
	Flash memory	1 GB
Power supply system	Power supply type	<ul style="list-style-type: none"> <li>600 W PoE AC (pluggable)</li> <li>1000 W PoE AC (pluggable)</li> <li>1000 W PoE DC (pluggable)</li> </ul>
	Rated voltage range	<ul style="list-style-type: none"> <li>AC input(600 /1000W AC PoE): 100 V AC to 130 V AC, 200 V AC to 240 V AC, 50/60 Hz</li> <li>High-Voltage DC input(600 /1000W AC PoE): 240 V DC</li> <li>DC input(1000 W DC PoE): -48 V DC to -60 V DC</li> </ul>
	Maximum voltage range	<ul style="list-style-type: none"> <li>AC input(600 /1000W AC PoE): 90 V AC to 290 V AC, 45 Hz to 65 Hz</li> <li>High-Voltage DC input(600 /1000W AC PoE): 190 V DC to 290 V DC</li> <li>DC input(1000 W DC PoE): -38.4 V DC to -72 V DC</li> </ul>
	Maximum power consumption	<ul style="list-style-type: none"> <li>176 W (without PD&amp;Card)</li> <li>1967 W (with PD, PD power consumption of 1791 W)</li> </ul>
	Power consumption in the case of 30% traffic load <sup>1</sup>	117 W
	Power consumption in the case of 100% traffic load <sup>1</sup>	124 W
	Minimum power consumption	71 W
Heat dissipation system	Heat dissipation mode	Air-cooled heat dissipation and intelligent fan speed adjustment
	Number of fan modules	2
	Airflow	Air flows in from the front side and exhausts from the rear panel.
	Maximum heat dissipation of the device (BTU/hour)	POE: 6711.60 non PoE: 600.53
Environment parameters	Long-term operating temperature	<ul style="list-style-type: none"> <li>0-1800 m: -5°C to 45°C</li> <li>1800-5000 m: The operating temperature decreases 1°C every time the altitude increases 220 m.</li> </ul>
	Short-term operating temperature	-5°C ~50°C
	Storage temperature	-40°C to +70°C
	Relative humidity	5%–95% (non-condensing)
	Operating altitude	5000 m
	Surge protection specification (power port)	<ul style="list-style-type: none"> <li>AC power port: ±6 kV in differential mode, ±6 kV in common mode</li> <li>DC power port: ±2 kV in differential mode, ±4 kV in common mode</li> </ul>

Item		CloudEngine S5736-S24UM4XC
Reliability	MTBF (year) <sup>2</sup>	59.44
	MTTR (hour)	2
	Availability	> 0.99999
Certification		<ul style="list-style-type: none"> <li>• EMC certification</li> <li>• Safety certification</li> <li>• Manufacturing certification</li> </ul> For details about certifications, see the section <a href="#">Safety and Regulatory Compliance</a> .

\*Note: The 8\*10GE SFP+ subcard works as 8\*10GE SFP+ by default, and can be changed to 2\*25GE SFP28 as required.

### NOTE

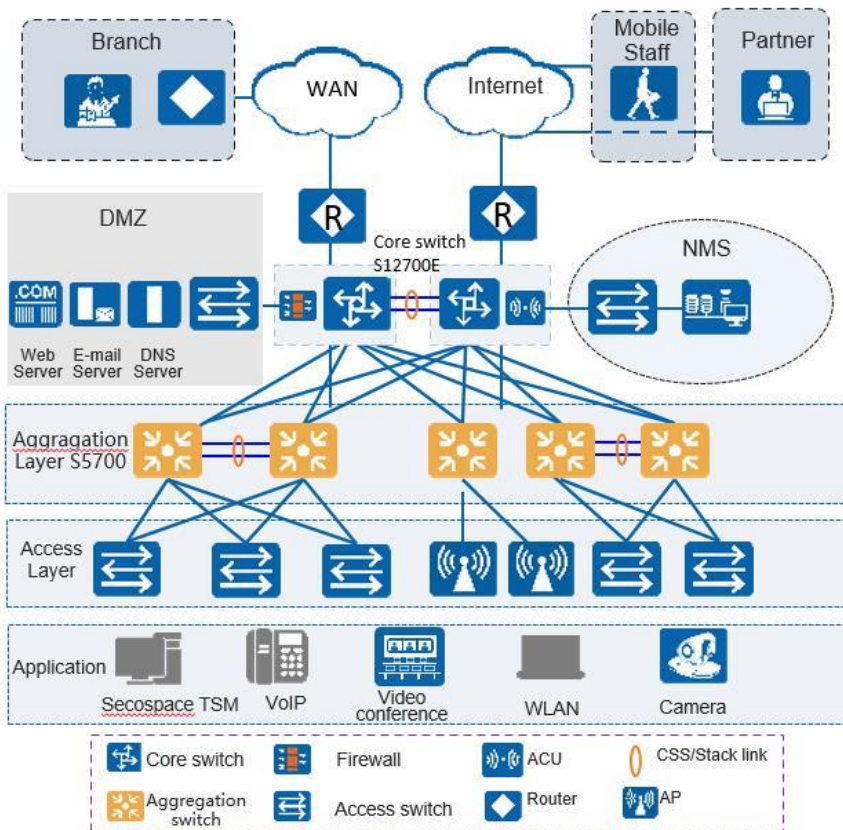
1: The power consumption under different load conditions is calculated according to the ATIS standard. Additionally, the EEE function is enabled and there is no PoE power output.

2: The reliability parameter values are calculated based on the typical configuration of the device. The parameter values vary according to the modules configured by the customer.

## Networking and Applications

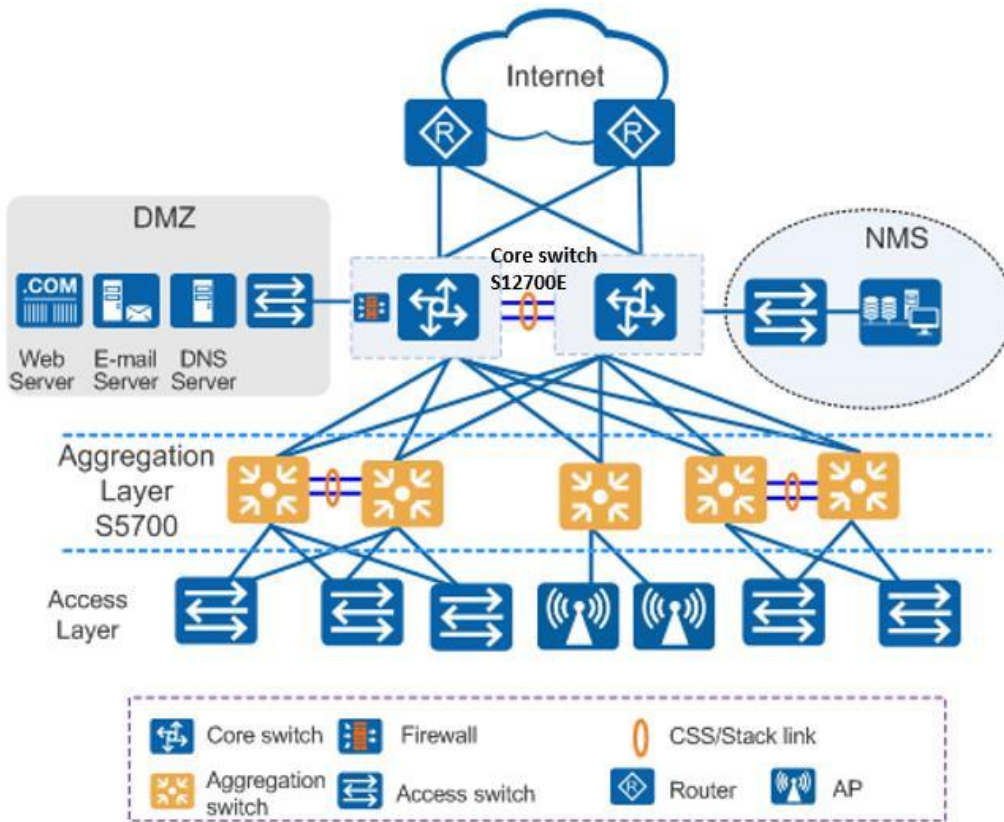
### Large-Scale Enterprise Campus Network

CloudEngine S5736-S series switches can be deployed at the access layer of a campus network to build a high-performance and highly reliable enterprise network.



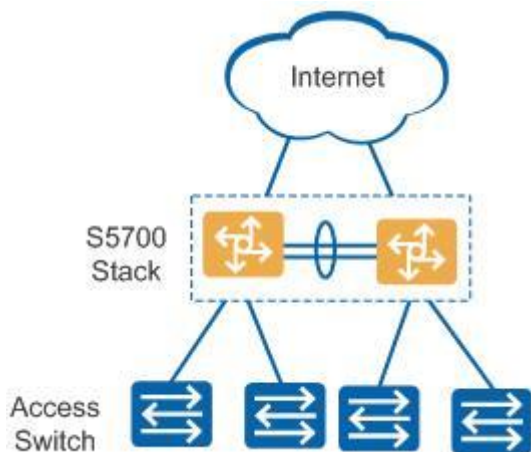
## Small- or Medium-scale Enterprise Campus Network

CloudEngine S5736-S series switches can be deployed at the aggregation layer of a campus network to build a high-performance, multi-service, and highly reliable enterprise network.



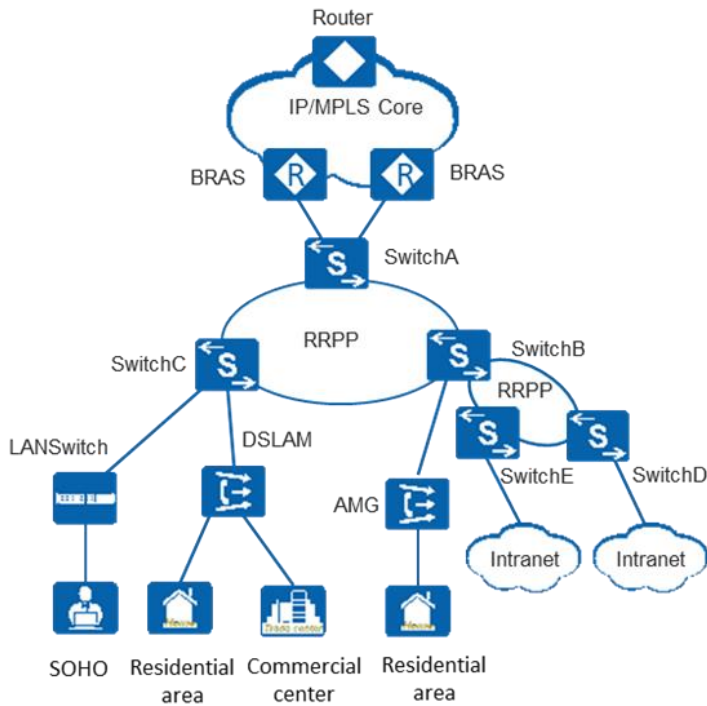
## Small-scale Enterprise Campus Network

With powerful aggregation and routing capabilities of CloudEngine S5736-S series switches make them suitable for use as core switches in a small-scale enterprise network. Two or more S5736-S switches use iStack technology to ensure high reliability. They provide a variety of access control policies to achieve centralized management and simplify configuration.



## Application on a MAN

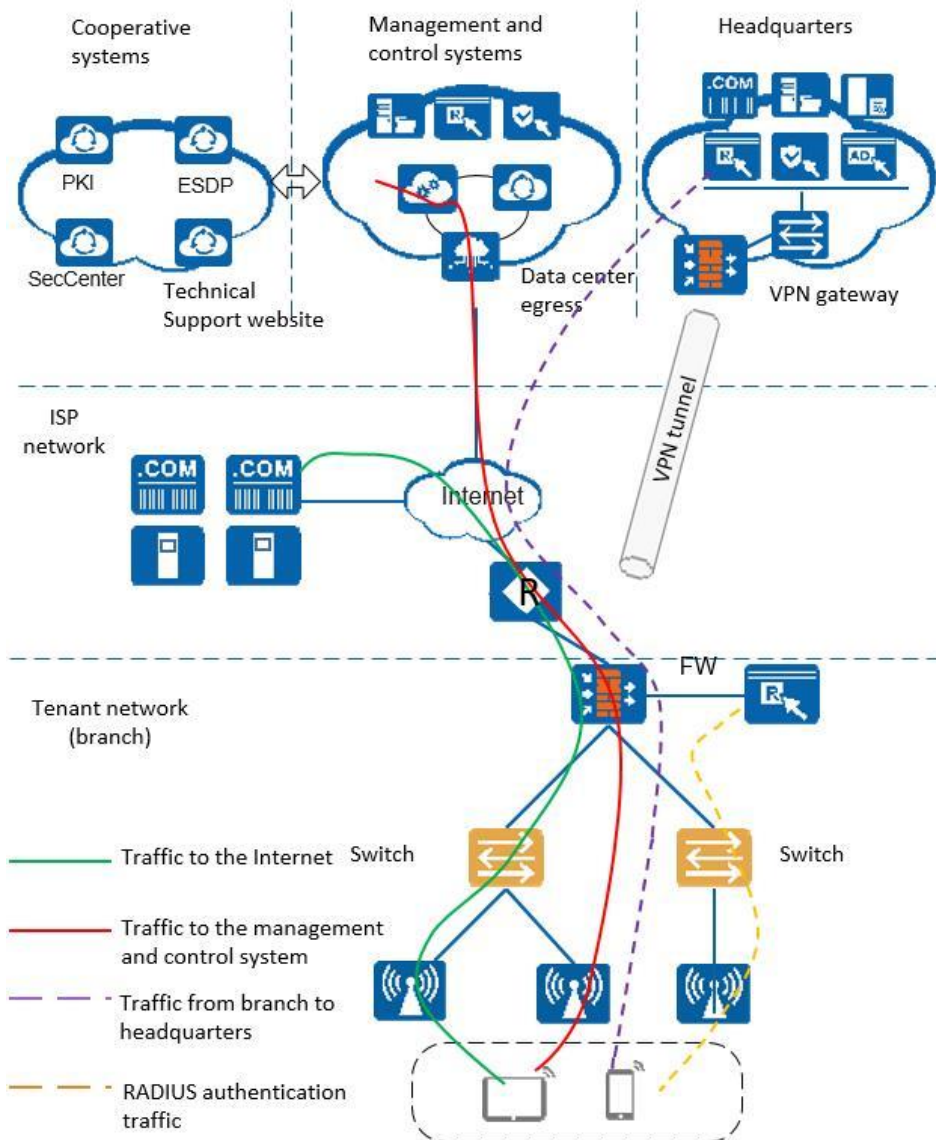
CloudEngine S5736-S series switches can be deployed at the access layer of a MAN (Metropolitan Area Network) to build a high-performance, multi-service, and highly reliable ISP MAN network.



## Application in Public Cloud

CloudCampus Solution is a network solution suite based on Huawei public cloud. CloudEngine S5736-S series switches can be located at the access layer.

The switches are plug-and-play. They go online automatically after being powered on and connected with network cables, without the need for complex configurations. The switches can connect to the management and control system (iMaster NCE-Campus for switches running V200R019C10 and later versions), and use bidirectional certificate authentication to ensure management channel security. The switches provide the NETCONF and YANG interfaces, through which the management and control system delivers configurations to them. In addition, remote maintenance and fault diagnosis can be performed on the management and control system.



## Safety and Regulatory Compliance

The following table lists the safety and regulatory compliance of the CloudEngine S5736-S.

Safety and regulatory compliance of the CloudEngine S5736-S series

Certification Category	Description
Safety	<ul style="list-style-type: none"> <li>• IEC 60950-1</li> <li>• EN 60950-1/A11/A12</li> <li>• UL 60950-1</li> <li>• CSA C22.2 No 60950-1</li> <li>• AS/NZS 60950.1</li> <li>• CNS 14336-1</li> <li>• IEC60825-1</li> <li>• IEC60825-2</li> <li>• EN60825-1</li> <li>• EN60825-2</li> </ul>
Electromagnetic Compatibility (EMC)	<ul style="list-style-type: none"> <li>• CISPR22 Class A</li> </ul>

Certification Category	Description
	<ul style="list-style-type: none"> <li>• CISPR24</li> <li>• EN55022 Class A</li> <li>• EN55024</li> <li>• ETSI EN 300 386 Class A</li> <li>• CFR 47 FCC Part 15 Class A</li> <li>• ICES 003 Class A</li> <li>• AS/NZS CISPR22 Class A</li> <li>• VCCI Class A</li> <li>• IEC61000-4-2</li> <li>• ITU-T K 20</li> <li>• ITU-T K 21</li> <li>• ITU-T K 44</li> <li>• CNS13438</li> </ul>
Environment	<ul style="list-style-type: none"> <li>• RoHS</li> <li>• REACH</li> <li>• WEEE</li> </ul>

#### NOTE

- EMC: electromagnetic compatibility
- CISPR: International Special Committee on Radio Interference
- EN: European Standard
- ETSI: European Telecommunications Standards Institute
- CFR: Code of Federal Regulations
- FCC: Federal Communication Commission
- IEC: International Electrotechnical Commission
- AS/NZS: Australian/New Zealand Standard
- VCCI: Voluntary Control Council for Interference
- UL: Underwriters Laboratories
- CSA: Canadian Standards Association
- IEEE: Institute of Electrical and Electronics Engineers
- RoHS: restriction of the use of certain hazardous substances
- REACH: Registration Evaluation Authorization and Restriction of Chemicals
- WEEE: Waste Electrical and Electronic Equipment

## MIB and Standards Compliance

### Supported MIBs

The following table lists the MIBs supported by the CloudEngine S5736-S.

MIBs supported by the CloudEngine S5736-S series

Category	MIB
Public MIB	<ul style="list-style-type: none"> <li>• BRIDGE-MIB</li> <li>• DISMAN-NSLOOKUP-MIB</li> <li>• DISMAN-PING-MIB</li> <li>• DISMAN-TRACEROUTE-MIB</li> </ul>

Category	MIB
	<ul style="list-style-type: none"> <li>• ENTITY-MIB</li> <li>• EtherLike-MIB</li> <li>• IF-MIB</li> <li>• IP-FORWARD-MIB</li> <li>• IPv6-MIB</li> <li>• LAG-MIB</li> <li>• LLDP-EXT-DOT1-MIB</li> <li>• LLDP-EXT-DOT3-MIB</li> <li>• LLDP-MIB</li> <li>• MPLS-FTN-STD-MIB</li> <li>• MPLS-L3VPN-STD-MIB</li> <li>• MPLS-LDP-GENERIC-STD-MIB</li> <li>• MPLS-LDP-STD-MIB</li> <li>• MPLS-LSR-STD-MIB</li> <li>• MPLS-TE-STD-MIB</li> <li>• NOTIFICATION-LOG-MIB</li> <li>• NQA-MIB</li> <li>• OSPF-TRAP-MIB</li> <li>• P-BRIDGE-MIB</li> <li>• Q-BRIDGE-MIB</li> <li>• RFC1213-MIB</li> <li>• RIPv2-MIB</li> <li>• RMON2-MIB</li> <li>• RMON-MIB</li> <li>• SAVI-MIB</li> <li>• SNMP-FRAMEWORK-MIB</li> <li>• SNMP-MPD-MIB</li> <li>• SNMP-NOTIFICATION-MIB</li> <li>• SNMP-TARGET-MIB</li> <li>• SNMP-USER-BASED-SM-MIB</li> <li>• SNMPv2-MIB</li> <li>• TCP-MIB</li> <li>• UDP-MIB</li> </ul>
Huawei-proprietary MIB	<ul style="list-style-type: none"> <li>• HUAWEI-AAA-MIB</li> <li>• HUAWEI-ACL-MIB</li> <li>• HUAWEI-ALARM-MIB</li> <li>• HUAWEI-ALARM-RELIABILITY-MIB</li> <li>• HUAWEI-BASE-TRAP-MIB</li> <li>• HUAWEI-BRAS-RADIUS-MIB</li> <li>• HUAWEI-BRAS-SRVCFG-EAP-MIB</li> <li>• HUAWEI-BRAS-SRVCFG-STATICUSER-MIB</li> <li>• HUAWEI-CBQOS-MIB</li> <li>• HUAWEI-CDP-COMPLIANCE-MIB</li> <li>• HUAWEI-CONFIG-MAN-MIB</li> </ul>

Category	MIB
	<ul style="list-style-type: none"> <li>• HUAWEI-CPU-MIB</li> <li>• HUAWEI-DAD-TRAP-MIB</li> <li>• HUAWEI-DC-MIB</li> <li>• HUAWEI-DATASYNC-MIB</li> <li>• HUAWEI-DEVICE-MIB</li> <li>• HUAWEI-DHCPR-MIB</li> <li>• HUAWEI-DHCPS-MIB</li> <li>• HUAWEI-DHCP-SNOOPING-MIB</li> <li>• HUAWEI-DIE-MIB</li> <li>• HUAWEI-DNS-MIB</li> <li>• HUAWEI-DLDP-MIB</li> <li>• HUAWEI-ELMI-MIB</li> <li>• HUAWEI-ERPS-MIB</li> <li>• HUAWEI-ERRORDOWN-MIB</li> <li>• HUAWEI-ENERGYMNGT-MIB</li> <li>• HUAWEI-EASY-OPERATION-MIB</li> <li>• HUAWEI-ENTITY-EXTENT-MIB</li> <li>• HUAWEI-ENTITY-TRAP-MIB</li> <li>• HUAWEI-ETHARP-MIB</li> <li>• HUAWEI-ETHOAM-MIB</li> <li>• HUAWEI-FLASH-MAN-MIB</li> <li>• HUAWEI-FWD-RES-TRAP-MIB</li> <li>• HUAWEI-GARP-APP-MIB</li> <li>• HUAWEI-GTSM-MIB</li> <li>• HUAWEI-HGMP-MIB</li> <li>• HUAWEI-HWTACACS-MIB</li> <li>• HUAWEI-IF-EXT-MIB</li> <li>• HUAWEI-INFOCENTER-MIB</li> <li>• HUAWEI-IPPOOL-MIB</li> <li>• HUAWEI-IPV6-MIB</li> <li>• HUAWEI-ISOLATE-MIB</li> <li>• HUAWEI-L2IF-MIB</li> <li>• HUAWEI-L2MAM-MIB</li> <li>• HUAWEI-L2VLAN-MIB</li> <li>• HUAWEI_LDT-MIB</li> <li>• HUAWEI-LLDP-MIB</li> <li>• HUAWEI-MAC-AUTHEN-MIB</li> <li>• HUAWEI-MEMORY-MIB</li> <li>• HUAWEI-MFF-MIB</li> <li>• HUAWEI-MFLP-MIB</li> <li>• HUAWEI-MSTP-MIB</li> <li>• HUAWEI-BGP-VPN-MIB</li> <li>• HUAWEI-CCC-MIB</li> <li>• HUAWEI-MULTICAST-MIB</li> <li>• HUAWEI-NAP-MIB</li> </ul>



Category	MIB
	<ul style="list-style-type: none"> <li>• HUAWEI-NTPV3-MIB</li> <li>• HUAWEI-PERFORMANCE-MIB</li> <li>• HUAWEI-PORT-MIB</li> <li>• HUAWEI-PORTAL-MIB</li> <li>• HUAWEI-QINQ-MIB</li> <li>• HUAWEI-RIPv2-EXT-MIB</li> <li>• HUAWEI-RM-EXT-MIB</li> <li>• HUAWEI-RRPP-MIB</li> <li>• HUAWEI-SECURITY-MIB</li> <li>• HUAWEI-SEP-MIB</li> <li>• HUAWEI-SNMP-EXT-MIB</li> <li>• HUAWEI-SSH-MIB</li> <li>• HUAWEI-STACK-MIB</li> <li>• HUAWEI-SWITCH-L2MAM-EXT-MIB</li> <li>• HUAWEI-SWITCH-SRV-TRAP-MIB</li> <li>• HUAWEI-SYS-MAN-MIB</li> <li>• HUAWEI-TCP-MIB</li> <li>• HUAWEI-TFTPC-MIB</li> <li>• HUAWEI-TRNG-MIB</li> <li>• HUAWEI-XQOS-MIB</li> </ul>

## Standard Compliance

The following table lists the standards that the CloudEngine S5736-S complies with.

[Standard compliance list of the CloudEngine S5736-S series](#)

Standard Organization	Standard or Protocol
IETF	<ul style="list-style-type: none"> <li>• RFC 768 User Datagram Protocol (UDP)</li> <li>• RFC 792 Internet Control Message Protocol (ICMP)</li> <li>• RFC 793 Transmission Control Protocol (TCP)</li> <li>• RFC 826 Ethernet Address Resolution Protocol (ARP)</li> <li>• RFC 854 Telnet Protocol Specification</li> <li>• RFC 951 Bootstrap Protocol (BOOTP)</li> <li>• RFC 959 File Transfer Protocol (FTP)</li> <li>• RFC 1058 Routing Information Protocol (RIP)</li> <li>• RFC 1112 Host extensions for IP multicasting</li> <li>• RFC 1157 A Simple Network Management Protocol (SNMP)</li> <li>• RFC 1256 ICMP Router Discovery</li> <li>• RFC 1305 Network Time Protocol Version 3 (NTP)</li> <li>• RFC 1349 Internet Protocol (IP)</li> <li>• RFC 1493 Definitions of Managed Objects for Bridges</li> <li>• RFC 1542 Clarifications and Extensions for the Bootstrap Protocol</li> <li>• RFC 1643 Ethernet Interface MIB</li> <li>• RFC 1757 Remote Network Monitoring (RMON)</li> <li>• RFC 1901 Introduction to Community-based SNMPv2</li> </ul>

Standard Organization	Standard or Protocol
	<ul style="list-style-type: none"> <li>• RFC 1902-1907 SNMP v2</li> <li>• RFC 1981 Path MTU Discovery for IP version 6</li> <li>• RFC 2131 Dynamic Host Configuration Protocol (DHCP)</li> <li>• RFC 2328 OSPF Version 2</li> <li>• RFC 2453 RIP Version 2</li> <li>• RFC 2460 Internet Protocol, Version 6 Specification (IPv6)</li> <li>• RFC 2461 Neighbor Discovery for IP Version 6 (IPv6)</li> <li>• RFC 2462 IPv6 Stateless Address Auto configuration</li> <li>• RFC 2463 Internet Control Message Protocol for IPv6 (ICMPv6)</li> <li>• RFC 2474 Differentiated Services Field (DS Field)</li> <li>• RFC 2740 OSPF for IPv6 (OSPFv3)</li> <li>• RFC 2863 The Interfaces Group MIB</li> <li>• RFC 2597 Assured Forwarding PHB Group</li> <li>• RFC 2598 An Expedited Forwarding PHB</li> <li>• RFC 2571 SNMP Management Frameworks</li> <li>• RFC 2865 Remote Authentication Dial In User Service (RADIUS)</li> <li>• RFC 3046 DHCP Option82</li> <li>• RFC 3376 Internet Group Management Protocol, Version 3 (IGMPv3)</li> <li>• RFC 3513 IP Version 6 Addressing Architecture</li> <li>• RFC 3579 RADIUS Support For EAP</li> <li>• RFC 4271 A Border Gateway Protocol 4 (BGP-4)</li> <li>• RFC 4760 Multiprotocol Extensions for BGP-4</li> <li>• draft-grant-tacacs-02 TACACS+</li> <li>• RFC 6241 Network Configuration Protocol (NETCONF)</li> <li>• RFC 6020 YANG - A Data Modeling Language for the Network Configuration Protocol (NETCONF)</li> </ul>
IEEE	<ul style="list-style-type: none"> <li>• IEEE 802.1D Media Access Control (MAC) Bridges</li> <li>• IEEE 802.1p Traffic Class Expediting and Dynamic Multicast Filtering</li> <li>• IEEE 802.1Q Virtual Bridged Local Area Networks</li> <li>• IEEE 802.1ad Provider Bridges</li> <li>• IEEE 802.2 Logical Link Control</li> <li>• IEEE Std 802.3 CSMA/CD</li> <li>• IEEE Std 802.3ab 1000BASE-T specification</li> <li>• IEEE Std 802.3ad Aggregation of Multiple Link Segments</li> <li>• IEEE Std 802.3ae 10GE WEN/LAN Standard</li> <li>• IEEE Std 802.3x Full Duplex and flow control</li> <li>• IEEE Std 802.3z Gigabit Ethernet Standard</li> <li>• IEEE802.1ax/IEEE802.3ad Link Aggregation</li> <li>• IEEE 802.3ah Ethernet in the First Mile.</li> <li>• IEEE 802.1ag Connectivity Fault Management</li> <li>• IEEE 802.1ab Link Layer Discovery Protocol</li> <li>• IEEE 802.1D Spanning Tree Protocol</li> <li>• IEEE 802.1w Rapid Spanning Tree Protocol</li> <li>• IEEE 802.1s Multiple Spanning Tree Protocol</li> </ul>

Standard Organization	Standard or Protocol
	<ul style="list-style-type: none"> <li>IEEE 802.1x Port based network access control protocol</li> </ul>
ITU	<ul style="list-style-type: none"> <li>ITU SG13 Y.17ethoam</li> <li>ITU SG13 QoS control Ethernet-Based IP Access</li> <li>ITU-T Y.1731 ETH OAM performance monitor</li> </ul>
ISO	<ul style="list-style-type: none"> <li>ISO 10589 IS-IS Routing Protocol</li> </ul>
MEF	<ul style="list-style-type: none"> <li>MEF 2 Requirements and Framework for Ethernet Service Protection</li> <li>MEF 9 Abstract Test Suite for Ethernet Services at the UNI</li> <li>MEF 10.2 Ethernet Services Attributes Phase 2</li> <li>MEF 11 UNI Requirements and Framework</li> <li>MEF 13 UNI Type 1 Implementation Agreement</li> <li>MEF 15 Requirements for Management of Metro Ethernet Phase 1 Network Elements</li> <li>MEF 17 Service OAM Framework and Requirements</li> <li>MEF 20 UNI Type 2 Implementation Agreement</li> <li>MEF 23 Class of Service Phase 1 Implementation Agreement</li> <li>Xmodem XMODEM/YMODEM Protocol Reference</li> </ul>

## Ordering Information

The following table lists ordering information of the CloudEngine S5736-S series switches.

Model	Product Description
CloudEngine S5736-S24UM4XC	S5736-S24UM4XC Base(24*100M/1G Ethernet ports,Optional RTU upgrade to 2.5/5/10G, 4*10GE SFP+ ports, 1*expansion slot, PoE++, without power module)
CloudEngine S5736-S24UMXC	S5736-S24UM4XC 2.5&10G Bundle(12*100M/1G/2.5G Ethernet ports, 12*100M/1G/2.5G/5G/10G Ethernet ports, Optional RTU upgrade to 5/10G, 4*10GE SFP+ ports, 1*expansion slot, PoE++, 1*1000W AC power)
CloudEngine S5736-S24UMXC	S5736-S24UM4XC 10G Bundle(24*100M/1G/2.5G/5G/10G Ethernet ports, 4*10GE SFP+ ports, 1*expansion slot, PoE++, 1*1000W AC power)
PAC600S56-CB	600W AC PoE power module
PAC1000S56-CB	1000W AC PoE power module
PAC1000S56-DB	1000W AC PoE power module
PDC1000S56-CB	1000W DC PoE power module
S7X08000	2-port 25GE SFP28 or 8-port 10GE SFP+ interface card
S7Q02001	2-port 40GE QSFP+ interface card
ES5D21Q02Q00	2-port 40GE QSFP+ interface card
ES5D21Q04Q01	4-port 40GE QSFP+ interface card
FAN-023A-B	Fan module
L-1GUPG2.5G-S57S	S57-S series, 1G to 2.5G Electronic RTU License, 12-port
L-1GUPG5G-S57S	S57-S series, 1G to 5G Electronic RTU License, 12-port
L-1GUPG10G-S57S	S57-S series, 1G to 10G Electronic RTU License, 12-port

Model	Product Description
L-2.5GUPG5G-S57S	S57-S series, 2.5G to 5G Electronic RTU License, 12-port
L-2.5GUPG10G-S57S	S57-S series, 2.5G to 10G Electronic RTU License, 12-port
L-5GUPG10G-S57S	S57-S series, 5G to 10G Electronic RTU License, 12-port
N1-S57S-M-Lic	S57XX-S Series Basic SW,Per Device
N1-S57S-M-SnS1Y	S57XX-S Series Basic SW,SnS,Per Device,1Year
N1-S57S-F-Lic	N1-CloudCampus,Foundation,S57XX-S Series,Per Device
N1-S57S-F-SnS1Y	N1-CloudCampus,Foundation,S57XX-S Series,SnS,Per Device,1Year
N1-S57S-A-Lic	N1-CloudCampus,Advanced,S57XX-S Series,Per Device
N1-S57S-A-SnS1Y	N1-CloudCampus,Advanced,S57XX-S Series,SnS,Per Device,1Year
N1-S57S-FToA-Lic	N1-Upgrade-Foundation to Advanced,S57XX-S,Per Device
N1-S57S-FToA-SnS1Y	N1-Upgrade-Foundation to Advanced,S57XX-S,SnS,Per Device,1Year

## More Information


For more information about Huawei Campus Switches, visit <http://e.huawei.com> or contact us in the following ways:

- Global service hotline: <http://e.huawei.com/en/service-hotline>
- Logging in to the Huawei Enterprise technical support website: <http://support.huawei.com/enterprise/>
- Sending an email to the customer service mailbox: [support\\_e@huawei.com](mailto:support_e@huawei.com)

Copyright © Huawei Technologies Co., Ltd. 2024. All rights reserved.

No part of this document may be reproduced or transmitted in any form or by any means without prior written consent of Huawei Technologies Co., Ltd.

### Trademarks and Permissions

 HUAWEI and other Huawei trademarks are trademarks of Huawei Technologies Co., Ltd.

All other trademarks and trade names mentioned in this document are the property of their respective holders.

### Notice

The purchased products, services and features are stipulated by the contract made between Huawei and the customer. All or part of the products, services and features described in this document may not be within the purchase scope or the usage scope. Unless otherwise specified in the contract, all statements, information, and recommendations in this document are provided "AS IS" without warranties, guarantees or representations of any kind, either express or implied.

The information in this document is subject to change without notice. Every effort has been made in the preparation of this document to ensure accuracy of the contents, but all statements, information, and recommendations in this document do not constitute a warranty of any kind, express or implied.

### Huawei Technologies Co., Ltd.

Address: Huawei Industrial Base Bantian,  
Longgang Shenzhen 518129 People's  
Republic of China

Website: [e.huawei.com](http://e.huawei.com)